

login if some how I believe well  
Everyday - 365 always If some how;  
I believe well join  
always  
mypage christ in me is to live to die is to gain  
help he's my king, he's my song  
he's my life, and he's my joy  
EVERYDAY 365  
cart SHOPPING DAY QnA  
If you can't said Jesus. Everything is possible for him who believes.  
your two breaths are like tow fawns, like twin + favorite  
fawns of gazelle that browse among the lilies.  
diary  
review dont's you know me, Philip, even after I have been  
among you such a long time?. notice  
Anyone who has seen me has seen the Father. How can  
you say, 'show us the Father?';  
you diligently study the Scriptures because you think that by them  
you possess eternal Life.  
These are the scriptures that testify about me,

**신한카드**  
신한카드 3,000원 즉시할인 이벤트!  
신한카드 통합3주년기념  
**10월 즉시할인 이벤트!!**

이벤트기간 2010년 10월 01일 ~ 2010년 10월 10일 까지  
이벤트내용 5만원 이상 결제시, 신한카드 3,000원 할인  
ex) 50,000원 → 47,000원 70,000 → 67,000원  
참여방법 KCP결제창에서 쿠폰할인 받기 버튼 클릭



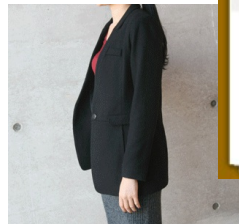
49,000



66,000



51,000



61,000



32,000



17,000



37,000



42,000



28,000

Home : Company : Guide : Privacy Policy : Agreement  
Address. 227-21 Sangpyeong-dong, Jinju-si, Gyeongsangnam-do, Korea (반쯤주소아님)  
License No. 613-19-22670  
On-line Sale License. 2009-경남-0004  
Company & President. 인터넷쇼핑데이 (대표자 : 도유정)  
Bank. 신한 81504706730, 하나 51191007796507, 농협 80116056059917 객현영, 도유정  
Tel. 055.747.3650 (gosteady88@naver.com)  
COPYRIGHT(C) 2008 WWW.365-SD.COM ALL RESERVED

KCP 서비스가입 확인사실  
고객님은 안전거래를 위해 현금 등으로 10만원 이상결제시 저희 쇼핑몰에서  
가입한 KCP의 구매안전 서비스를 이용하실 수 있습니다.







■■■■■■■■■  
15,000■



■■■  
29,000■



■■■  
56,000■



■■■■■\_■■■■■■  
19,000■



■■■  
16,000■



■■■■■■  
25,000■



■■■■■■■  
45,000■



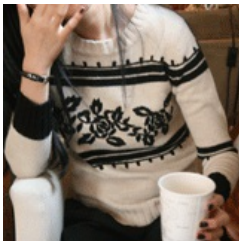
■■■■■-MD■■■■■■■■■■  
■■■]  
38,000■



■■■■■■  
37,000■



■■■■■  
45,000■



■■■■■[■■■]  
40,000■



■■■■■  
45,000■



■■■■■■  
32,000■



■■■■■  
39,000■



■■■■■  
40,000■



■■■■■  
30,000■



■■■■■■■  
30,000■



■■■■■  
34,000■



■■■■■■■[5color]-■■■■■  
■■■■■■  
27,000■



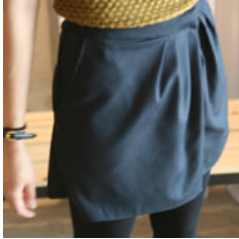
■■■■■  
54,000■



■■■■■  
35,000■



■■■■■  
71,000■



■■■■■  
32,000■



■■■■■  
39,000■



■■■■■  
37,000■



■■■■■■■■■■  
25,000■



■■■■■■■■  
119,000■



■■■■■■■  
15,000■